



LEWITT | HACKMAN
SHAPIRO | MARSHALL | HARLAN
A LAW CORPORATION

Navigating Employee Complaints: A Practical Guide to Investigations and Disciplinary Action

Join Sue M. Bendavid and Tal Burnovski Yeyni for a webinar as they provide a roadmap for navigating the complexities of workplace complaints.

They will share practical guidelines on an employer's legal duties and the implications of failing to follow a fair, impartial process.

What Will Be Covered:

- How to identify red flags in employee complaints
- Who is qualified to lead an investigation
- The process for questioning the complainant, the accused, and key witnesses
- Essential documentation strategies and requirements
- Best practices for concluding the investigation and applying disciplinary measures

RSVP below.



Wednesday, March 18, 2026
12:00 p.m. - 1:00 p.m.

RSVP: [GoToWebinar](#)



Sue M. Bendavid
Chair, Employment
Practice Group



Nicholas Kanter
Chair, Business/Civil
Litigation Practice Group



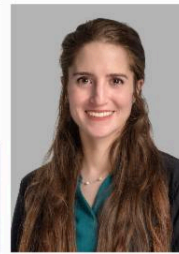
Tal Burnovski Yeyni



Thomas M. Morrow



Joshua S. Stein



Molly K. Thorpe

Continuing Education Credits

Please indicate your need for credits on the web form when you [RSVP](#). Attendees may be eligible for 1 hour of MCLE*, CPE**, or HRCI*** credits upon completion.



* Lewitt Hackman is a State Bar of California approved MCLE provider.

** CPE Credit: The Basic Group Internet-Based webinars or Basic Group Live seminars require no prerequisites or advance preparation. You will receive general information about state and local laws and judicial proceedings affecting employers with employees in California. The field of study is Personnel/HR. The information provided will help you decide when to advise your clients to seek legal assistance. There is no cost to attend. Should the program be cancelled, attendees will be notified via telephone or email.

Webinar attendees wishing to earn CPE credits must log in before the presentation and should log off afterwards. Those who meet these and other attendance requirements will be issued an attendance certificate for 1 CPE credits via email.

Lewitt Hackman is registered with the National Association of State Boards of Accountancy on the National Registry of DPE Sponsors. State Boards of accountancy have final authority on acceptance of courses for credit. Complaints regarding registered sponsors may be submitted to the National Registry of CPE Sponsors: www.learningmarket.org. For more information regarding program cancellation policies or any other concerns, please contact Chris Podbielski of our office at (818) 907-3271.

***HRCI credit pending



Lewitt Hackman | 16633 Ventura Blvd. 11th Floor | Encino, CA 91436 US

[Unsubscribe](#) | [Update Profile](#) | [Our Privacy Policy](#) | [Constant Contact Data Notice](#)



Try email marketing for free today!